

audison

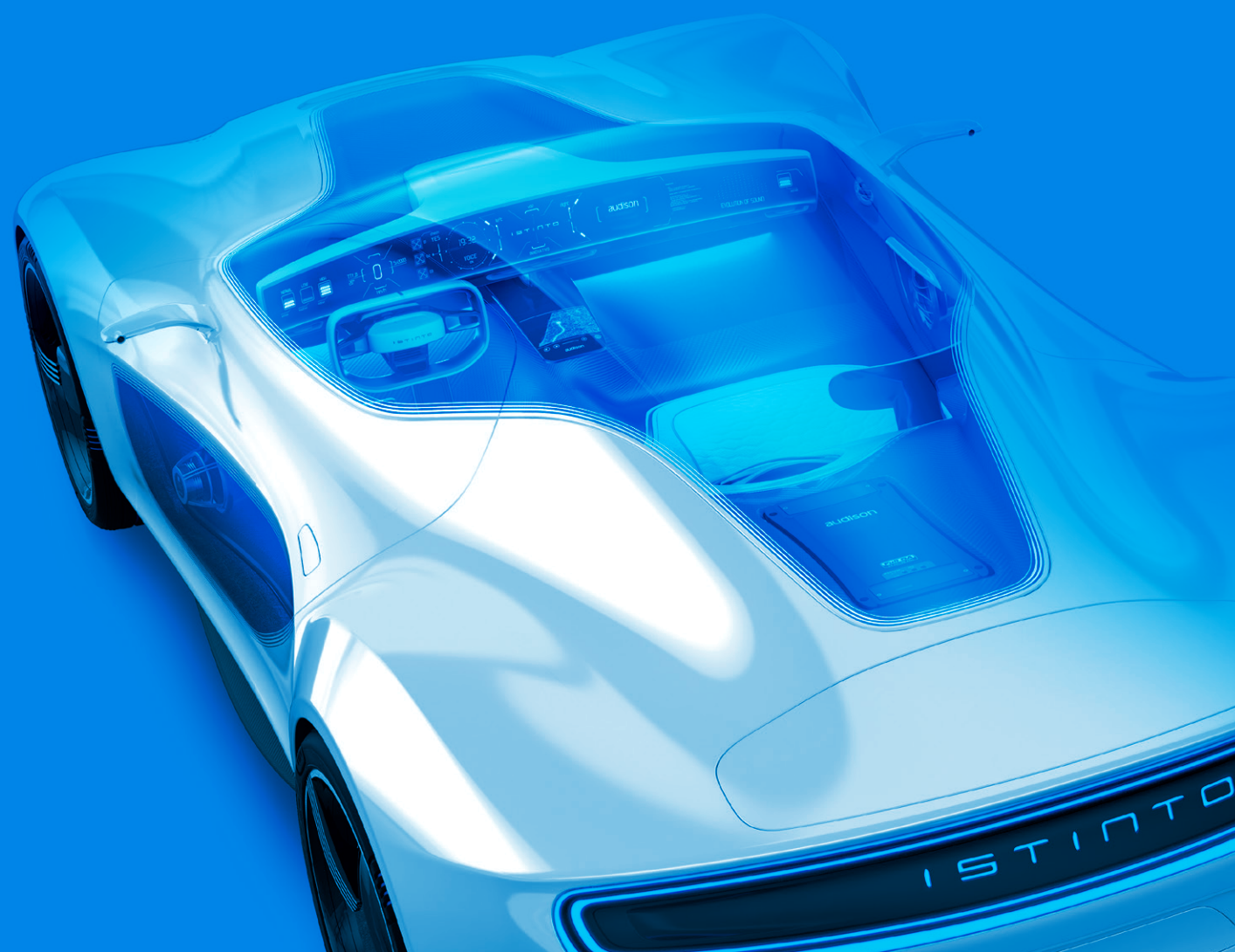
ISTINTO INNOVATIVO

www.audison.eu



2020 PRODUCT CATALOGUE

OVER 30 YEARS
OF PRODUCING
THE FINEST MOBILE
ELECTRONICS
IN THE WORLD



audison

bit

voce

prima

SR

ISTINTO INNOVATIVO	2
BIT DRIVE TECHNOLOGY	4
APM (ACOUSTIC PERFORMANCE MEASUREMENT)	5
FULL DA HD, THE NEXT AUDIO EXPERIENCE	6
DON'T CALL IT DSP, IT'S AN AUDISON BIT	8
BIT ONE HD VIRTUOSO	10
BIT ONE	12
BIT NOVE DRC	13
BIT TEN	14
BIT PLAY HD	15
BIT ACCESSORIES	16
THE AUTHENTIC VOICE	18
VOCE AMPLIFIERS	20
VOCE SPEAKERS	22
PRIMA - THE OEM INTEGRATOR	24
PRIMA AMPLIFIERS	26
PRIMA SPEAKER SYSTEMS	30
PRIMA SPEAKER COMPONENTS	36
PRIMA COAXIALS	38
PRIMA SPEAKERS TABLE DATA	39
PRIMA SUBWOOFER COMPONENTS	40
PRIMA SUBWOOFER BOXES	42
PRIMA ACTIVE SUBWOOFER BOXES	44
PRIMA SOUND PACK	46
PRIMA SOUND PACK FOR BMW AND MINI	48
PRIMA SOUND PACK FOR FORD F-150	50
PRIMA SOUND PACK FOR GOLF 7	52
SR AMPLIFIERS	54
ABOUT ELETTRONEDIA	68

www.audison.eu

ISTINTO INNOVATIVO

audison



Sound reproduction has forever been a fascinating world where emotion and technology cohabit. Like any other form of art, the best result is achieved when these two values, at their peak, finally embrace. With this combination in mind, every project we develop is born with this natural instinct, making us extremely proud of this choice.



Colosseo, Roma



The next audio
experience

www.audison.eu

BIT DRIVE TECHNOLOGY

audison

5

APM

ACOUSTIC PERFORMANCE MEASUREMENT



Bit Drive technology, incorporated in all of the **bit family DSPs**, allows the communication with the **Audison bit Tune**, the innovative tool for the **automatic calibration of bit processors**, including the whole equipment used by the mobile electronics specialist to maximize in-car acoustic performance.



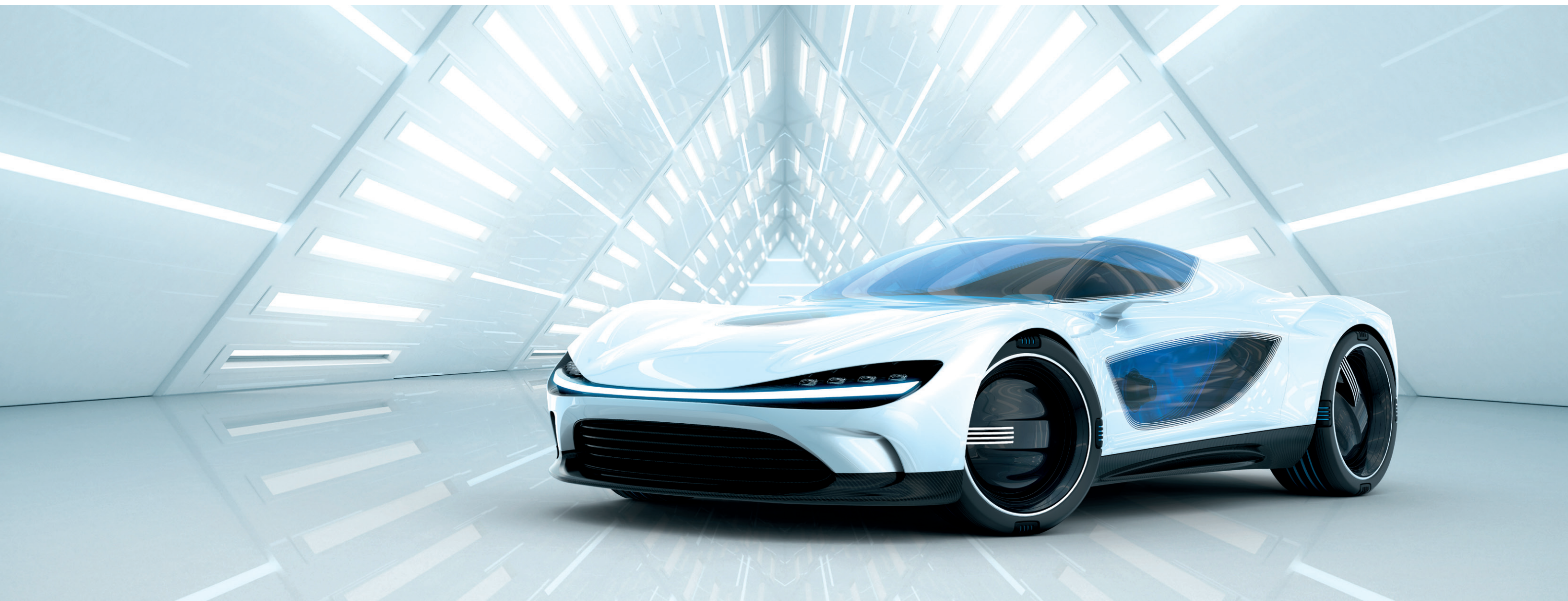
bit Drive
technology



APM
technology



Audison **APM** is the result of years of research and development into a complex topic, the evaluation of in-car sound quality: this software designed for Audison bit Tune, provided with dedicated hardware, **is able to replicate the auditory perception of humans** and therefore to measure the system performance with a high level of precision.



FULL DA HD, THE NEXT AUDIO EXPERIENCE



Audison
Full DA HD
on web

The availability of high-resolution digital audio files is a great opportunity to reach new hi-fi milestones, also within the car compartment. **Full DA HD technology**, making the most of the listening experience of Hi-Res audio files, **provides pure digital signal transfer from the source through the processor into the amplifiers, all in 24 bit/96 kHz Hi-Res digital format.**

REDISCOVER MUSIC NUANCES, FEEL THE DIFFERENCE

Thanks to Audison, it is now possible to enjoy an audio system free from the limitations and signal alterations of a traditional analog system.



BIT PLAY HD

VIRTUOSO

AV5.1K HD

OPTICAL



AD LINK



DIGITAL 24 bit / 96 kHz

audison



D/A

ONE SINGLE SIGNAL
CONVERSION

MINIMAL CONNECTION
POINTS

NOISE FREE
SIGNAL



DON'T CALL IT DSP, IT'S AN AUDISON BIT

audison

BIT GLOSSARY



pure digital signal transfer with a resolution up to 24 bit / 48 kHz



pure digital signal transfer with a resolution up to 24 bit / 96 kHz



Analog Device SHARC™ series chip with floating point precision, to reach the highest audio quality



linear phase filters and equalizer, for a new in-car listening experience



Auto tuning by Audison bit Tune and communication with bit Drive portal



I/O routing approach dedicated to OEM sound system (hi-level), that is literally based on "pass-through" the existing OEM infotainment's output channels



de-equalization function to "flatten" any equalization applied by default by OEM sources



Input delay compensation of time-delayed factory outputs prior to signal summing



Compensation of the overall system phase to recreate the original signal, even in case of OEM sound enhancement algorithms



APC (Automatic Polarity Correction) Polarity check of inputs wire and automatic correction in case of inversion



USS technology allows bit processors to work with head-units featuring the "speaker load detection" circuit



I/O routing approach based on signal summing, signal reconditioning & flattening. With this setup mode, automatic algorithm options named DE-EQ / DE-Phase, DE-TA, Polarity check and Auto Input Switch can be selected.



bit on Audison website

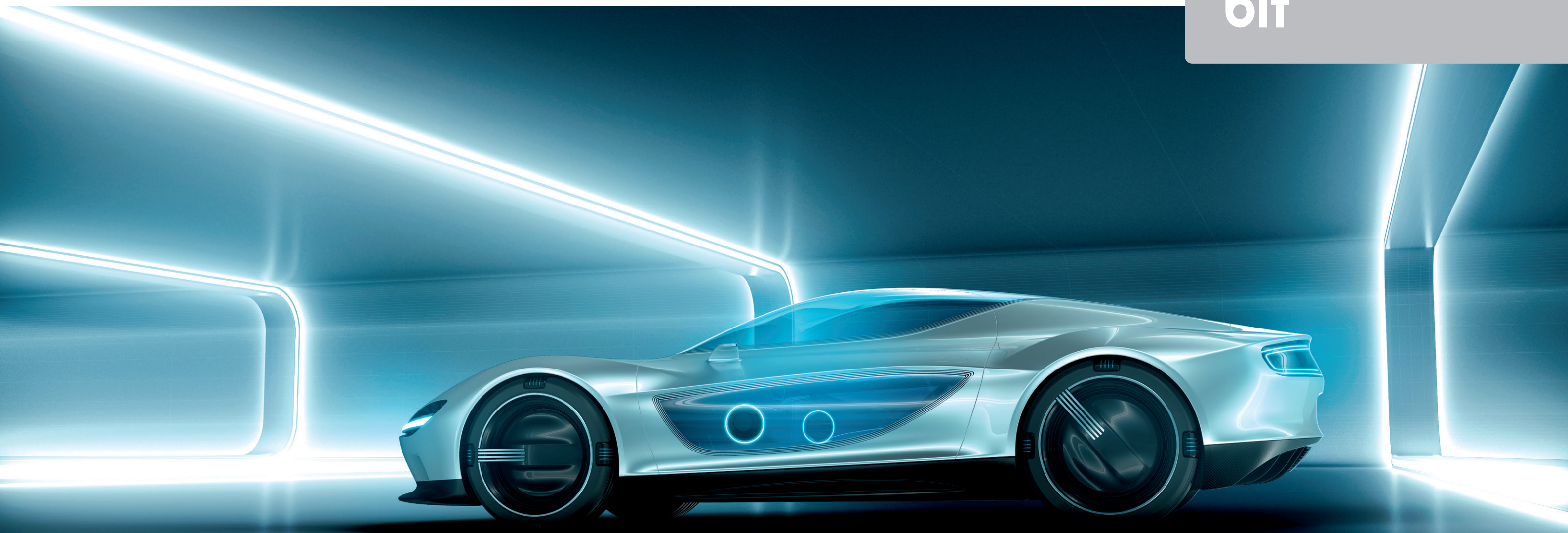


Audison bit comparative table



In 2008, Audison presented the **bit One**, the DSP that has **changed car audio forever**, introducing source de-equalization and automatic input sensitivity setting, key technologies for integration with OEM systems. From this unique background, Audison ISTINTO INNOVATIVO has developed the full range of **bit processors**, confirming their leadership.

bit



bit AUDIO
PROCESSOR



12 IN
13 OUT

Virtuoso

bit One HD

Just as the virtuous performer holds the absolute mastery of the instrument and the technique connected to it, the bit One HD Virtuoso features unique skills dedicated to the most ambitious OEM Integration projects and excels in the uncompromising Hi- End systems.



DRC MP
Provided



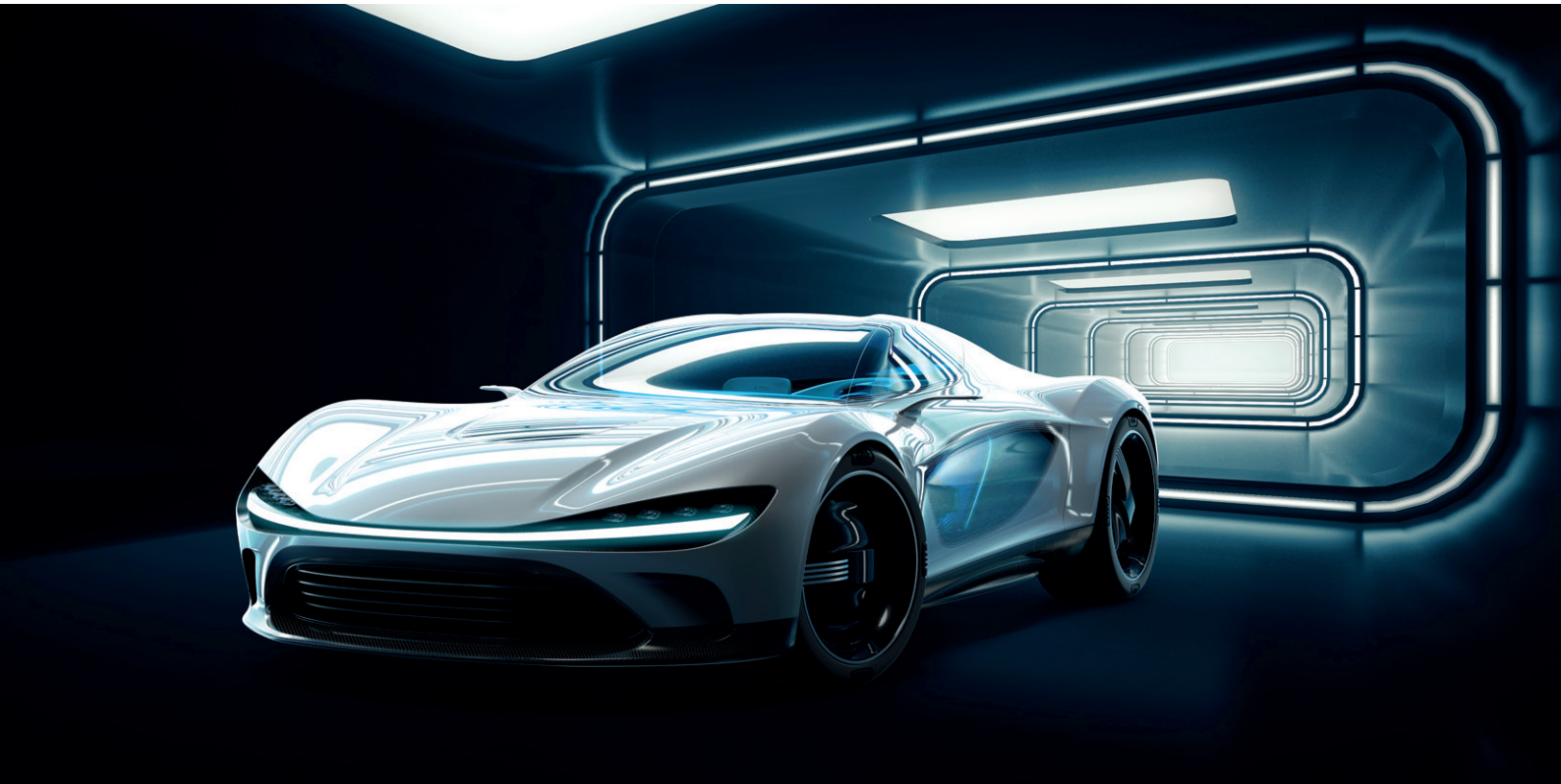
bit One HD
website



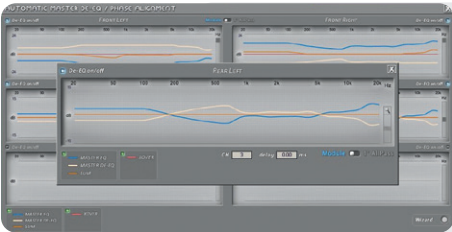
bit One HD
on website



FIR FILTERS
bit One HD VIRTUOSO features up to **9 digital channels with crossover FIR filters**. This sound processing mode, much more demanding in terms of calculation resources, ensures a **leading-edge in-car listening experience**.



bit One HD VIRTUOSO makes the most of Hi-Res audio, providing the ability to develop a Full DA HD system featuring up to 13 channels. Thanks to the powerful floating-point Sharc™ series DSP, the audio signal is not subject to any down-sampling, preserving all the information of the Hi-Res digital file reproduced. Audison bit One HD VIRTUOSO achieves the same audio quality as professional digital workstations within the car compartment. The DRC MP remote control supplied is the perfect interface between the bit One HD processor and the user.



INPUT ANALYSIS
A guided configuration routine **automatically synchronizes the input audio channels**, which are often time-delayed from the OEM source or amplifier, prior to the signals summing. **The advanced de-equalization, featuring linear-phase FIR filters, flatten the OEM system frequency response** and compensate the overall system phase automatically to obtain an unparalleled reconstruction of the original signal, even in case of OEM sound enhancement algorithms.



THREE EQUALIZATION STAGES
For an absolute control of the car compartment acoustics, the R&D team has introduced **three equalizers based on FIR and IIR filters**:
Input EQ - to flatten the curve based on the input selected
Channel EQ - up to 13 parametric eq point per channel to adapt the frequency response
Main EQ - to shape the sound of the entire system according to the user's personal music preferences.

bit AUDIO PROCESSOR



8 IN 8 OUT

bit One

The bit One, equipped with a powerful floating-point Sharc™ series DSP, is the ideal choice to develop a hi-end system, providing up to 8 channels of pure digital audio in a Full DA chain. The DRC remote control provided manages the main system functions, allowing the user to drive safely.



AUTO TUNING WITH AUDISON BIT TUNE

Connecting the bit One to the Audison bit Tune, through an automatic procedure, all the processor's basic audio parameters can be optimized (time alignment, equalization and output levels) ensuring an excellent acoustic result.



bit One
on website



DRC
Provided



PC-SOFTWARE WITH CONFIGURATION WIZARD

During the set-up, the bit One automatically reconstructs a full-bandwidth signal, with a flat frequency response from the OEM speaker-in, ready to be processed for an outstanding sound quality.

audison

bit AUDIO PROCESSOR



6 IN 9 OUT

bit Nove

The bit Nove, 9 output channels processor, was developed exploiting the unique know-how within the industry achieved by Audison staff. It is the perfect tool to expand a car audio system maximizing its performance. Provided DRC AB enables the main system controls (volume, balance, fader and subwoofer volume, bass-boost) without the use of a PC.



When bit Nove is installed into a compatible vehicle using the iDatalink Maestro AR (sold separately), the user can enjoy a perfect integration with factory installed navigation, advanced safety systems, voice-controlled hands-free and infotainment.



bit Nove
on website



DRC AB
Provided



USS
universal
speakers
simulator

USS TECHNOLOGY

Thanks to the integration of the USS technology (Universal Speakers Simulator), the bit Nove can also be connected to head-units featuring the "speaker load detection" circuit that would otherwise mute the audio signal output.

audison

bit AUDIO PROCESSOR



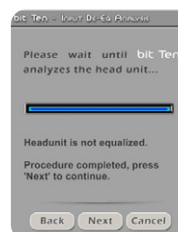
4 IN
5 OUT

bit Ten

bit Ten is a multi-function digital processor featuring analog inputs, capable of transforming an ordinary OEM or after-market system into a high-performance system. Provided with a 32 bit, 147 MHz clock speed DSP as well as 24 bit A/D and D/A converters, bit Ten is controlled by a software especially developed for signal treatment according to the vehicle acoustic peculiarities.



bit Ten features USS technology (Universal Speakers Simulator) to be connected to head-units featuring the "speaker load detection" circuit that would otherwise mute the audio signal output.



DE-EQ SET

This feature allows the de-equalization of the standard source without the need to connect the processor to the PC.



bit Ten
on website



DRC AB
Optional

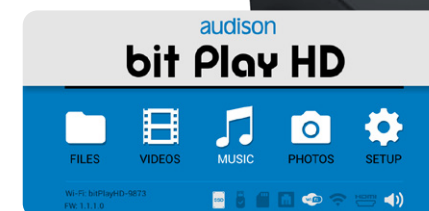


PC SOFTWARE

The user friendly PC software simplifies the settings for signal processing, ensuring **great results with little time**. Using the wizard, in just a few clicks you can map the inputs and outputs and de-equalize the signal from the OEM source.

audison

bit MULTIMEDIA PLAYER



bit Play HD

Hi-Res liquid music is the new quality standard for audio reproduction. This is why Audison developed the bit Play HD, the **in-car multimedia player** to enjoy **your entire Hi-Res music collection**. The TOSLINK digital output allows you to connect the bit Play HD to the bit One HD processor without any loss of quality, to **fully experience the superior resolution of Hi-Res audio files**. The DRC MP "Navi Command" function **provides the ability to browse through the player main menu** using the Joystick, in the same way as with the remote control.



FLAC

The bit Play HD reproduces FLAC files, the industry standard to compress Hi-Res audio files without any quality loss.



bit Play HD on
Audison website



DRC MP
Optional



bit Play HD SSD VERSION

The optional SSD version features a 240 GB solid state hard drive already installed, to store your entire Hi-Res audio files collection.

audison

bit ACCESSORIES



bit DMI
bit DMI is a digital interface for MOST systems, providing the ability to connect the bit processors and the Audison amplifiers, equipped with digital inputs, to OEM multimedia systems in cars featuring the MOST technology based on optical fibre. Thanks to the digital connection, the signal can be transmitted without loss of quality, allowing the use of the OEM head unit audio controls.
For bit One HD VIRTUOSO, bit One, bit Nove, AP bit, AP F bit



USS4
Some OEM head-units have a test circuit that monitors the presence of a low-impedance load to enable audio outputs. When you connect this type of head-unit to the high-level inputs of an Audison bit processor, which has a high impedance load, audio outputs are silenced. By inserting the USS4 between the source and the processor/amplifier, this issue no longer occurs.
For bit One



bit ACCESSORIES



SPM 4
Stereo passive mixer (unpowered) featuring 4 input channels and 2 output channels, designed for active OEM multi-way systems where each speaker is powered by one specific amplified channel. SPM4 mixes audio through 4 transformers specifically developed to achieve very low distortion and highly linear acoustic response.
For all models



SFC
SFC provides a solution to the issues related to digital interfacing like in the case of the Digital head-unit having a higher sampling frequency (96/192 kHz) than the receiver that can not handle frequencies higher than 48 kHz.
For bit One



C20
The C20 interface converts the signals coming from the coaxial digital input and from the analog AUX-IN into a TOSLINK optical digital output signal (up to 24 bit/192kHz). The conversion allows the integration of the new Hi-Res portable devices equipped with coaxial digital output (75Ω) and smartphones with analog output on 3.5 mm mini Jack (also 4 poles) with Audison processors featuring an optical digital input compatible with the resolution of the signal sent to the C20.
For bit One HD VIRTUOSO, bit One, bit Nove, AP bit, AP F bit



THE AUTHENTIC VOICE

audison

Hi-Res
AUDIO

Full DA
HD

19



Voce on Audison
website

The precious synergy between Voce amplifiers and Full DA HD technology takes the in-car listening experience to a new level of excellence; the synthesis of a unique know-how employed in mobile audio reproduction.

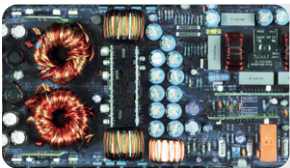
voce

voce AMP

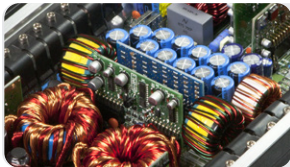


AV 5.1k HD

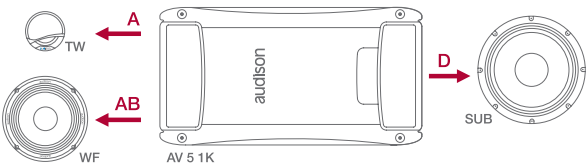
AV 5.1k HD provides the ability to create a Full DA HD chain ensuring maximum reduction of any signal deterioration, preserving the purity of Hi-Res audio files.



MODULAR CONSTRUCTION
The modular design ensures that the power supply motherboard does not interfere with the delicate audio signal, providing noise-free amplification. The removable input/crossover section allows for an easy insertion of the AV bit IN digital module.



DOUBLE TRANSFORMERS
The power supply stage features dual multiple-winding transformers to increase the efficiency and power delivery in any difficult load condition.



A + AB + D CLASS TECHNOLOGY
AV5.1k HD and AV5.1k use three different classes of amplification, A, AB and D in one single chassis. A Class for linearity and detail; AB Class for accuracy and high power; D Class for enhanced power efficiency.

voce AMP



AV uno



AV due



AV quattro



AV 5.1k



AV bit IN HD
Optional
Allows for every AV amplifier to be part of a Full DA HD system, for a Hi-Res digital connection with bit processors.



Optional
When you drive the subwoofer in mono, for all AV models, you can use the **VCRA Analog Remote Volume Control** by connecting it to the special SUB VOL socket.

AV uno mono amplifier features an innovative circuitry called **POD (Power On Demand)** that combines the purity of the AB Class with the efficiency of the D Class amplifiers. **AV due** and **AV quattro** are AB Class audiophile amplifiers at the service of pure sound. **AV 5.1k** provides the most complete amplifier choice, combining A Class superior details for the mid-high, AB Class quality for the mid-bass and D Class power to drive a subwoofer.

TECHNICAL SPECIFICATIONS			AV uno	AV due	AV quattro	AV 5.1k - AV 5.1k HD
Channel mode			1	2 - 1	4 - 3 - 2 (A/B)	5 (A/B/C)
Output Power (RMS) @14.4 VDC	@ 4 Ω	W x Ch	700 x 1	260 x 2	120 x 4 / 400 x 2	75x2/A + 140x2/B + 600x1/C
	@ 4 Ω	W x Ch (mono)	-	900 x 1	120 x 2 + 400 x 1	-
	@ 4/2 Ω	W x Ch	-	-	120 x 2 + 200 x 2	75x2/A + 140x2/B + 1000x1/C
	@ 2/4 Ω	W x Ch	-	-	200 x 2 + 400 x 1	75x2 4Ω/A + 250x2/B + 600x1/C
	@ 2 Ω	W x Ch	1300 x 1	450 x 2	200 x 4	-
	@ 1 Ω	W x Ch	1700 x 1	-	-	-

	RMS Output Power	4 Ω, 1% THD, 14.4 VDC	W x Ch	700 x 1	260 x 2	120 x 4	75 x 2 + 140 x 2 + 600 x 1
	S/N Ratio	Ref. 1 W Output	dBA	80	80	80	A/B: 80 - C: 78

voce COMP / SYSTEM |



AV 1.1
TWEETER

AV 3.0
MIDRANGE

AV 6.5
WOOFER

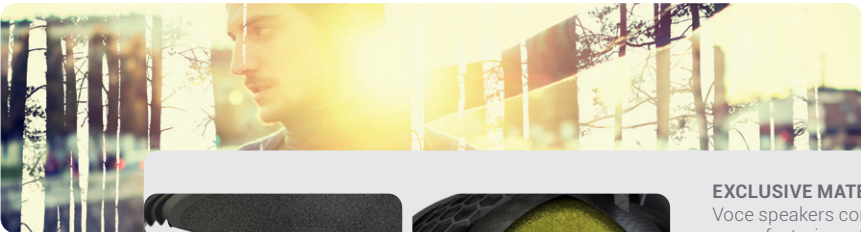


AV K6
SYSTEM



Included:
AV 3.0, AV K6
Optional:
AV 6.5, AV X6.5

Innovative design for reference performance at the service of sound:
a new voice for music.



EXCLUSIVE MATERIALS
Voce speakers cones are made of cotton fiber pressed paper featuring a Light Damping treatment, a new material specifically developed to provide a natural and linear sound performance. The tweeters domes are made of TETOLON, a combination of silk and cotton with proprietary damping treatment, providing low mass and resonance-free response up to ultrasonic frequencies.

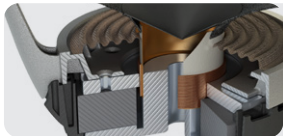
voce COAX



AV X6.5
COAXIAL



ORIENTABLE HIGH FREQUENCY TUNING
It provides the ability to optimize dispersion in the high frequency range to achieve the best performance in the real listening position.



CCAW VOICE COIL
Extremely lightweight and compact, the Copper Clad Aluminium Wire voice coil provides very high efficiency and optimal thermal dissipation.

TECHNICAL SPECIFICATIONS		AV 1.1	AV 3.0	AV 6.5	AV K6	AV X6.5
Power handling	peak W	180	100	200	250	200
	continuous W	Hi-pass filtered 2.0 kHz @ 12 dB/Oct	Hi-pass filtered 250 Hz @ 12 dB/Oct	100	125	100
Freq. response	Hz	1.2k ÷ 22k	200 ÷ 14k	50 ÷ 7k	50 ÷ 22k	50 ÷ 22k
Sensitivity	dB/Spl	92	93	91	91	91

THE OEM INTEGRATOR

audison

sound pack
plug&sound

bit Drive
your sound

25



Prima on Audison website

Audison Prima was designed to meet the interest of the enthusiasts who like to appreciate all the nuances of the musical message with components that are perfectly integrated in the car OEM system, preserving the most precious requirement of OEM integration: space.

THE CHALLENGE

Integrating an aftermarket audio system



Compatibility issues



EASY TO INSTALL



Fine-tune the system for the exact car model

THE SOLUTION

Audison Plug&Sound Prima sound packs



SPECIFICALLY DESIGNED



EASY TO INSTALL



SETUP FILES READY TO DOWNLOAD

prima



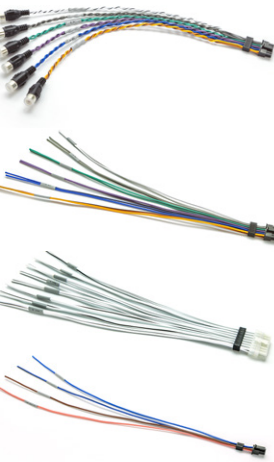
Piazza del Duomo, Milano



AVAILABLE
24 V
EDITION

AP F8.9 bit

AP F8.9 bit is dedicated to the most demanding integration projects, where high power is required along with the flexibility of the nine-channel DSP. The word "Forza", meaning "Power" in Italian, well describes the 8 x 85 W RMS and 4 x 260 in bridge mode (RMS @ 4Ω), with an optimal power to size ratio.



The AP F8.9 bit includes a set of four high quality cables supplied with a protective printed strip placed upstream of the Molex connectors to increase the resistance to torsion.



The integrated 9 channels processor is equipped with a dedicated software and 7 pre-configured presets for a Plug & Sound experience.



When AP bit amplifiers are installed into a compatible vehicle using the iDatalink Maestro AR (sold separately), the user can enjoy a perfect integration with factory installed navigation, advanced safety systems, voice-controlled hands-free and infotainment.



AP F1D

The AP F1D amplifier was designed to drive the most demanding subwoofer and is the ideal extension of the AP F8.9 bit. It is 1Ω stable and can supply the impressive power of 800 W RMS at 2Ω within compact dimensions.



Thanks to the built-in Audison USS technology (Universal Speakers Simulator), AP F8.9 bit can also be correctly connected to head-units with "speaker load detection" function that monitors the presence of a low-impedance load to enable the audio outputs.



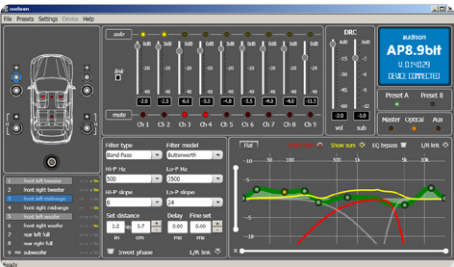
TECHNICAL SPECIFICATIONS				AP F8.9 bit	AP F1D
Channel mode				8 - 4	1
Output Power (RMS) @14.4 VDC Dual Power - Hi-Current	@ 4 Ω	W x Ch		85 x 8	500
		W x Ch (bridge)		260 x 4	
	@ 2 Ω	W x Ch		130 x 8	800
Built-in DSP				√	
	RMS Output Power	4Ω, 1%THD, 14.4 VDC	W x Ch	85 x 8	500
	S/N Ratio	Ref. 1 W Output	dBA	80	80

prima AMP



AP8.9 bit

AP bit amplifiers with nine channels built-in DSP brought a wind of change to OEM integration, featuring seven system configuration presets selectable through a rotary switch. Available in eight (AP8.9 bit), five (AP5.9 bit) and four (AP4.9 bit) amplified channel versions, they dispense up to 520 W total into the palm of your hand, at the service of OEM integration.



USER FRIENDLY PC SOFTWARE
It simplifies the settings for signal processing, ensuring great results with little time. Using the wizard, in just a few clicks you can map the inputs and outputs and de-equalize the signal from the OEM source.

PRIMA TOWER KIT
With this optional stacking system it is possible to stack up to 3 AP amps to save space without incurring in overheating.



prima AMP



AP5.9 bit



AP4.9 bit



AP4 D



AP1 D

The four channels AP4 D and the mono AP1 D are the two non-DSP models, working as extensions of power. The combinations are virtually unlimited: for example you could choose an AP5.9 bit and add an AP4 D amplifier, creating a very powerful nine channel system with minimum bulk.




DRC MP
Optional



DRC AB
Optional



AP bit processors (AP F8.9 bit, AP 8.9 bit, AP 5.9 bit, AP 4.9 bit) setup of basic parameters (time alignment, equalization, levels, etc.) can be auto-calibrated with Audison bit Tune, ensuring a correct acoustic result in a very short time.

TECHNICAL SPECIFICATIONS				AP8.9 bit	AP5.9 bit	AP4.9 bit	AP4 D	AP1 D
Channel mode				8 - 4	5	4 - 2	4 - 2	1
Output Power (RMS) @ 12.0 ÷ 14.4 VDC	@ 4 Ω	W x Ch	35 x 8	20 x 2 + 50 x 2 + 150 x 1	70 x 4	70 x 4	310 x 1	
		W x Ch (bridge)	130 x 4	-	260 x 2	260 x 2	-	
	@ 2 Ω	W x Ch	65 x 8	40 x 2 + 90 x 2 + 270 x 1	130 x 4	130 x 4	540 x 1	
Built-in DSP			✓	✓	✓	-	-	
	RMS Output Power	4Ω, 1%THD, 14.4 VDC	W x Ch	35 x 8	20 x 2 + 50 x 2 + 150 x 1	70 x 4	70 x 4	310 x 1
	S/N Ratio	Ref. 1 W Output	dBA	85	80	75	85	79

prima SYSTEMS



APK 165P
2 WAY SYSTEM

The new Prima APK 165P two-way loudspeaker system, capable of handling up to 345 W peak, is the ideal combination to fully exploit the power of the AP F8.9 bit or all other Prima amplifiers used in high power configurations.



APCX P 2T, APCX P 2W CROSSOVERS

To minimize the overall dimensions and simplify the cables routing, thus facilitating the installer's work, the APK 165P system uses separate ultra-compact crossovers for tweeters and woofers, made with carefully selected and sized components to manage high power avoiding saturation phenomena.

prima SYSTEMS



AIF technology, to support OEM integration, provides the specialist with three different types of faceplates:

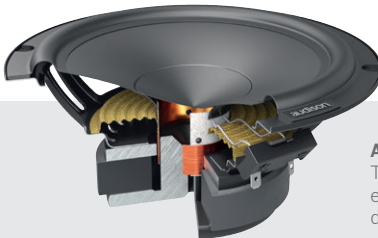
- 1. OEM, for an easy and correct factory placement
- 2. Mesh grille: to obtain the best compromise between protection and performance with a-pillar installations
- 3. Spoke grille: for maximum acoustic performance with a-pillar installations



Thanks to the AIF, the AP 1P tweeter expresses its full potential in every application scenario. It is supplied with three mounting accessories that make the AP 1P install a breeze:

- 1. Watch band
- 2. Double-angle cup
- 3. Flush Mounting Ring

Exhaustive research combined with long listening sessions brought Prima speakers system to a level of performance never achieved before in the OEM Integration scenario.



AP 6.5P

The AP 6.5P woofer features a very wide excursion to cope with the most important dynamic peaks without any compression.



AP 1P

The double Neodymium tablet used in the motor provides an excellent extension in high frequency and together with the 1" CCAW voice coil ensures an outstanding dynamic response.

prima SYSTEMS



The APK 165 Ω2 system was developed with 2Ω nominal impedance with the purpose of exploiting all the power made available by the AP8.9 bit amplifier.



audison

prima SYSTEMS



The three-way APK 163 includes a separate crossover dedicated to each speaker, simplifying OEM speaker replacement.



From R&D to final product
KLIPPEL
since 2000



APCX TW

The crossover included features a two-position level selector providing the ability to adapt its response to its two main applications: +2 dB if installed behind the OEM grille, 0 dB for an A-pillar installation without additional grilles between the tweeter and the listener.

audison

prima SYSTEMS



APK 130
2 WAY SYSTEM



APK 570
2 WAY SYSTEM

The R&D team optimized the electro-acoustic parameters of the new woofers for installation in the car door, respecting all the characteristics of the Prima speakers, such as the compact size of the basket to facilitate installation.



prima SYSTEMS



APK 690
2 WAY SYSTEM

APK 570 and APK 690 systems are ideal for car models with doors equipped to house elliptical speakers, featuring the AP 1 tweeter with dedicated ultra-compact crossovers.

prima COMP



AP 1
TWEETER



AP 4
MIDRANGE



AP 5
WOOFER

The Audison Prima speaker components feature a complete range dedicated to OEM Integration: from the AP 1 tweeter to the AP 690 woofer, many solutions have been introduced to ease the installation in OEM placements. The result of this exhausting work of research gave life to a series of speakers capable of handling noticeable power combined with high efficiency and a balanced timbre.



AP 2
WIDE RANGE

Prima AP 2 wide range reproduces the entire range of mid and high frequencies and is perfect for cars of the GM, Ford and Toyota group with 50 mm (2 in.) OEM placements in the dashboard or A-pillar, where it is combined with an elliptical woofer in the car door. The advantage of emitting the entire spectrum of frequencies by itself, responsible for creating the virtual stage with absolute phase coherence, **ensures a wide acoustic scene concentrated in the upper side of the dashboard. The very low distortion** and the lack of crossover point in the mid-high range also provides a **natural and pleasant listening experience.**

audison

prima COMP



AP 6.5 - AP 6.5 2Ω
WOOFER



AP 8
WOOFER

Grille included



AP 690
WOOFER

The **AP 6.5 2Ω** woofer has been developed with 2Ω nominal impedance with the purpose of exploiting all the power made available by the AP8.9 bit amplifier capable of 65W into a 2Ω load.

AP 690 is the perfect solution for car models with doors equipped to house elliptical speakers.

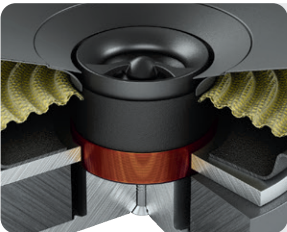


audison

prima COAX



The APX 4, APX 5, APX 6.5 and APX 570 coaxials are provided with an acoustic lens specifically designed to ensure an extremely linear frequency response, also off-axis, typical of in-door installations. APX 690 is provided with a dedicated 40 mm horn loaded dome tweeter, that contributes to maximize efficiency up to 96dB SPL.



CONCENTRIC COAXIAL TWEETER
The concentric tweeter, integrated inside the woofer, allows for a linear phase response, for an improved in-car soundstage.



Piazza dei Miracoli, Pisa



TECHNICAL SPECIFICATIONS		APK 130	APK 165	APK 165 Ω2	APK 165P	APK 163	APK 570	APK 690
Power handling	peak	225	300	300	345	375	300	300
	continuous	75	100	100	115	125	100	100
Freq. response	Hz	70 ÷ 20k	60 ÷ 20k	50 ÷ 20k	50 - 24k	50 ÷ 20k	55 - 20 k	40 - 20 k
Sensitivity	dB/SPL	93 dB	93,5 dB	95 dB	92,5	93,5 dB	93,5	95

TECHNICAL SPECIFICATIONS		AP 1	AP 2	AP 4	AP 5	AP 6.5	AP 6.5 Ω2	AP 8	AP 690
Power handling	peak	150 Hi-Pass filtered @ 3,5 kHz - 12 dB Oct.	50	120	150	210	210	300	300
	continuous	-	25	40	50	70	70	100	100
Freq. response	Hz	2k ÷ 20k	150 ÷ 20k	80 ÷ 7,5k	70 ÷ 5k	60 ÷ 5k	60 ÷ 5k	35 ÷ 3k	40 ÷ 5k
Sensitivity	dB/SPL	93	83,5	91	93	93,5	95	93,5	95

TECHNICAL SPECIFICATIONS		APX 4	APX 5	APX 6.5	APX 570	APX 690
Power handling	peak	120	150	210	210	300
	continuous	40	50	70	70	100
Freq. response	Hz	80 ÷ 23k	70 ÷ 23k	60 ÷ 23k	60 ÷ 23k	40 ÷ 23k
Sensitivity	dB/SPL	91	93	94	93	96

prima SUB COMP



APS 8 D
SUBWOOFER

APS 10 D
SUBWOOFER

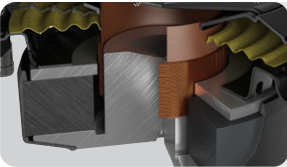
APS 10 S4S
SUBWOOFER

Prima subwoofer components have been developed with a primary goal: to deliver high output in tight spaces. The **APS 10 D** and **APS 8 D** models are designed to deliver maximum performance in a sealed enclosure with ultra-compact volumes. Both dual voice-coil versions feature push connectors for ease of wiring and configurations.

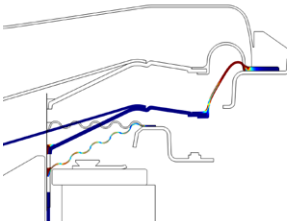
The configuration of the single 4Ω voice coil makes **APS 10 S4S** ideal to be driven by the new AP F8.9 bit amplifier with two channels bridged. This setup also provides the possibility to create custom enclosures with two **APS 10 S4S** driven by the **AP 1D** amplifier using the 540 W RMS delivered on the 2Ω load resulting from the drivers connection in parallel.



MASSIVE MOTOR
Optimized with FEM (Finite Element Modeling) for perfect control under high power and high excursion conditions.



NO POLE VENT
Air vents on the basket underneath the spider, eliminating the need for vents on the bottom-plate, allowing mounting close to rear wall of enclosure.



OPTIMIZED GEOMETRY
The design of cone, dust-cap and basket guarantee large excursions of the mobile group while keeping the mounting depth to a minimum.

prima SUB COMP

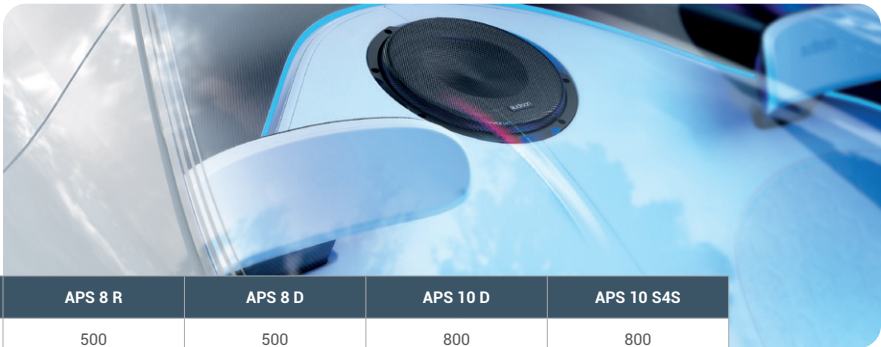


APS 8 R
SUBWOOFER

With the aim of providing high acoustic output even when used with lower power, the **APS 8 R** was designed for use in reflex enclosures.



Grille and gasket included for all APS models



TECHNICAL SPECIFICATIONS		APS 8 R	APS 8 D	APS 10 D	APS 10 S4S
Power handling	peak	500	500	800	800
	continuous	250	250	400	400
Impedance	Ω	4	4 + 4	4 + 4	4
Sensitivity	dB/SPL	84	83.5	84	83,5

prima SUB BOXES



The **APBX 8 DS** sealed loaded enclosure provides an impressive performance/size ratio, exploiting the full power of the AP5.9 bit mono channel or with two pairs of AP8.9 bit bridged channels. The **APBX 10 DS**, a 10" subwoofer loaded in a 12-litre sealed enclosure, is dedicated to the highest performing Prima systems, using the AP1 D amplifier for the sub section. The **APBX 10 S4S** sealed enclosure is the ideal choice to be driven by the new AP F8.9 bit using two channels bridged. Designed to house the single 4Ω voice coil, APS 10 S4S subwoofer offers an ultra-performing Plug & Play solution. The **speaker's mechanical excursion of more than 18 mm** ensures incredible authority, while the refined Thiele&Small parameters setup provides the ideal balance for all music genres.

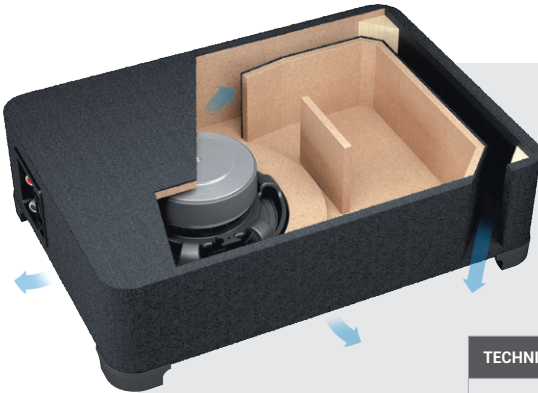


ssp SUB SMART PLUG
The enclosures SSP terminal block features both traditional push contacts and a Plug-&-Play connector, allowing the impedance to be configured as required and providing a quick release if the enclosure needs to be removed.

prima SUB BOXES



The 8-inch single 4 Ω voice-coil subwoofer, designed for APBX 8 R reflex loaded box, maximizes efficiency in combination with the AP8.9 bit amplifier.



REFLEX BOX
The **APBX 8 R** loaded enclosure was developed with reflex loading, with tuning designed to concentrate output in the lowest frequency range exploiting the boost found in most cars below 60 Hz known as "cabin gain".

TECHNICAL SPECIFICATIONS		APBX 8 R	APBX 8 DS	APBX 10 DS	APBX 10 S4S
Box Type		Reflex box	Sealed box	Sealed box	Sealed box
	peak	500	500	800	800
Power handling	continuous	250	250	400	400
Impedance	Ω	4	4 + 4	4 + 4	4



ssd -2 SIDES 2 SOUNDS
This feature provides the ability to choose between Up-Firing and Down-Firing mounting options to satisfy the taste of every enthusiast.

prima ACTIVE SUB

APBX 8 AS2
ACTIVE SUB



APBX 10 AS2
ACTIVE SUB



Prima active subwoofers feature a built-in D Class amplifier with **HE-LI (High Efficiency Low Impedance) technology**, to exploit the whole SPL from their **custom designed low-impedance drivers**. The low-profile sealed box design has been optimized for their custom drivers that require extremely compact dimensions to perform at their peak, producing a solid bass from an enclosure that is only 6 inches (127 mm) deep. The HRC AP remote level control provided allows the control of subwoofer levels directly from the driver's seat.



HE-LI (HIGH EFFICIENCY LOW IMPEDANCE) TECHNOLOGY
The **HE-LI built-in amplifier** does not feature a DC-DC voltage booster, reaching the impressive efficiency level of 90%, pretty close to the theoretical limit for D Class.



HRC AP
Provided

prima ACTIVE SUB



Colosseo, Roma



BUILT-IN FILTER
The built-in variable frequency low-pass filter (50-200 Hz) can be by-passed when used with AP bit amplifiers, provided with built-in DSP.



BASS-BOOST
Adjustable bass-boost control (0 ÷ 6 dB) at 45 Hz.



EASY PLUG IN/OUT
The control panel features both Hi-Level and Low-Level inputs with automatic turn-on to ease the plug in/out of the box.



Input stage **DBT (Dynamic Bass Tracking)** technology allows to fully use of the HE-LI high efficiency amplifier power and to enjoy a tense and dynamic bass even at very high listening volumes. DBT monitors the input signal in real time by detecting in advance the peaks which, if not processed, will bring the amplifier / subwoofer system into uncontrolled distortion, when it is pushed to maximum power.

TECHNICAL SPECIFICATIONS		APBX 8 AS	APBX 10 AS
Box Type		Active sealed box	Active sealed box
	peak	500	800
Power handling	continuous	250	400
	Impedance	0,4	0,16

PRIMA SOUND PACK

PRIMA SOUND PACK CONVERTS THE CAR CABIN INTO A CONCERT HALL, WITH A PERFECTLY INTEGRATED SOLUTION.

prima



Prima Sound Packs configurator



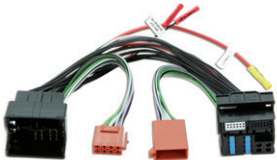
audison



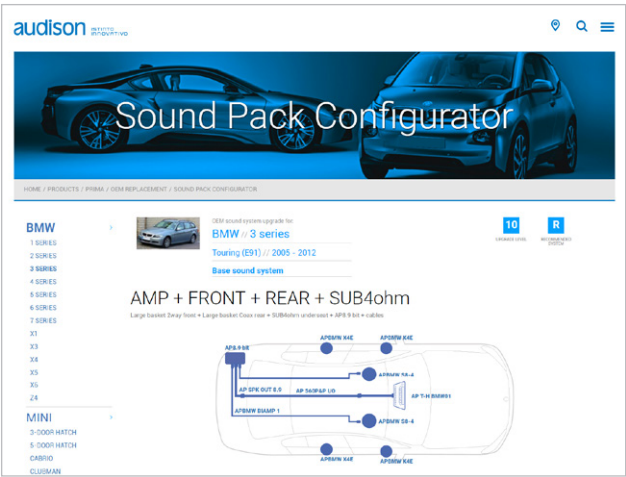
Build the Sound Pack that best represents you, using the on-line configurator on Audison website. Prima Sound Pack **elevates the audio system performance to a level far unimaginable for OEM placements**, delivering the authentic Audison listening pleasure.



DCC - DIRECT COCKPIT CURRENT
To speed-up installation time preserving safety and reliability, the Audison R&D team equipped the AP bit amplifiers with DCC, an innovative management circuit which monitors the power supply current consumption in real-time. This solution provides the ability to connect the amplifier to the cockpit directly without reaching the battery.



PLUG&PLAY CABLES
Designed to ensure maximum ease of installation, according to the "Plug&Sound" philosophy.



PRIMA SOUND PACK
Audison engineers, through accurate measurements and listening tests, have created **setup files for each car model that ensure a superior quality standard going beyond traditional analog technology**. These **setup files** can be downloaded from the online-configurator.

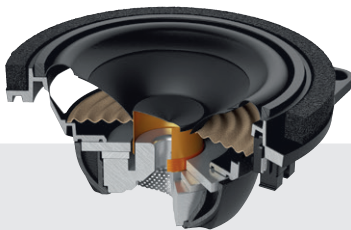
audison

prima SOUND PACK FOR BMW AND MINI



The two-way APBMW K kits for BMW and Mini create a three-dimensional sound stage and give the musical message the essential timbre accuracy. Available in two basket and fixing screws options, K4E and K4M according to the model, the kit is provided with all BMW and Mini custom installation accessories.

BMW and MINI are trademarks of BMW AG (Bayerische Motoren Werke Aktiengesellschaft)



NEODYMIUM MAGNETIC GROUPS
All Prima Sound Pack speakers for BMW and Mini have been developed with Neodymium Magnetic groups to maximize performance with minimal bulk and weights, core elements of the OEM upgrade.



DIE-CAST ALUMINIUM BASKET
These design choices minimize the influence of mechanical structure and installation on sound.



DIRECT REPLACEMENT SUBWOOFER
The 200 mm (8") APBMW S subwoofers allow a "direct replacement" of the OEM speakers underneath the front seats, making the most of the factory acoustic load and generating deep and crisp low frequencies.

prima SOUND PACK FOR BMW AND MINI



The 100 mm (4") APBMW X coaxials, available in the X4E - X4M options, have been designed for BMW-MINI models that do not allow the installation of a two-way system on the front or for the upgrade of the rear system.

You can choose between S8-2 with 2 ohm impedance and S8-4 with 4 ohm impedance for improved system composition versatility.



Sound Pack configurator on Audison website

TECHNICAL SPECIFICATIONS		APBMW K4E	APBMW K4M	APBMW X4E	APBMW X4M	APBMW S8-2	APBMW S8-4
Power handling	peak	100	100	80	80	300	300
	continuous	50	50	40	40	150	150
Impedance	Ω	4	4	4	4	2	4
Freq. response	Hz	90 ÷ 23k	90 ÷ 23k	100 ÷ 22k	100 ÷ 22k	40 ÷ 500	35 ÷ 500
Sensitivity	dB/SPL	89	89	88	88	91	88

prima SOUND PACK
FOR FORD F-150



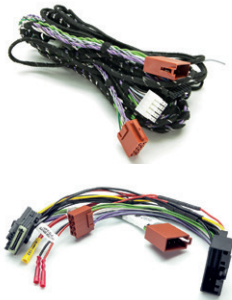
The Sound Pack solutions dedicated to the Ford F-150 are the final audio upgrade for this iconic Pick-Up. You can create the Sound Pack that best suits your needs through the online configurator.



For the F-150 models equipped with Sony audio system the Sound Pack will include the Maestro AR CAN-Bus interface for communication with AP bit amplifiers through a T-Harness and a set of dedicated Connection cables (FS2 450.2, FS2 250.2, FSF 030.2).



The Sound Pack includes two processor setup files (overall and driver) developed by the Audison R&D team to maximize the performance of each specific F-150 model.



Two T-Harnesses, for F-150 models released before 2015 and after 2015, have been specifically developed for the sound systems without amplifier to connect the head-unit and two types of extension cables (for AP8.9 bit and AP5.9 bit) to reach the amplifier.

Ford, Ford logo and Ford F-150 are the trademarks or registered trademarks of Ford Motor Corporation.

prima SOUND PACK
FOR FORD F-150



The top configurations are based on the AP8.9 bit in multi amplification with APK 690 or APK 570 systems featuring elliptical woofers and AP 1 tweeters, with rear APX 6.5 and APX 570 coaxials.



The system is then completed by the APBX 10 AS 2 amplified subwoofer located underneath the rear seats for powerful and controlled bass. This Sound Pack configuration option delivers very high performance, boasting a wide dynamic range and a distortion-free output even at extreme listening volumes.

- The list of accessories on the online configurator includes:
- 1. speaker support dedicated to the AP 1 tweeter *
 - 2. adapter rings to install the AP 6.5 Ω 2 / APX 6.5 *
 - 3. adapter rings to install the APK 690 / APX 690 *
 - 4. speaker cable adapter *

* Based on the release years



prima SOUND PACK
FOR GOLF G7



A complete solution developed specifically for the VW Golf 7, featuring the Audison AP8.9 bit G7 amplifier with built-in DSP presets customized for Golf 7 with a dedicated Prima speaker system and accessories. The optional APBX G7 subwoofer has been engineered to mate perfectly with the available enclosure volume, exploiting all the power the AP8.9 bit G7 delivers.



APSP G7

TECHNICAL SPECIFICATIONS		Front
Component		AP 6.5 Q2 G7*
Size	mm (inch)	Woofer 165 (6.5)
Power handling	peak	210
	continuous	70
Impedance	Ω	2
Freq. response	Hz	60 ÷ 20k
Crossover type		2-Way active

* With OEM tweeters



FRONT SPEAKERS: AP 6.5 Q2 G7
2 way system featuring the AP 6.5 Q2 G7 to fully exploit the 65 W power per channel at 2 Ω of the AP8.9 bit G7 amplifier. The system is packaged with composite OEM speaker baffles, harnesses and seals to retrofit the woofers into factory locations.

Golf® is a trademark of Volkswagen®

prima SOUND PACK
FOR GOLF G7



AP 8.9 bit G7 OUTPUT CHANNEL MAP			
CHANNEL	MODE	SPEAKER	POWER
1-2	Stereo	AP 6.5 Q2 G7 Front Woofers	2 x 65W RMS @ 2 Ω
3-4	Stereo	OEM Rear Speakers	2 x 35W RMS @ 4Ω
5-6	Stereo	OEM Front Tweeters	2 x 35W RMS @ 4Ω
7-8	Bridge	APBX G7 - Subwoofer	1 x 130W RMS @ 4 Ω



AP8.9 bit G7

AP8.9 bit G7
The 8 channels in this flexible "all-in-one" amplifier have been factory configured to power the complete speaker system including the APBX G7 subwoofer.



TECHNICAL SPECIFICATIONS		
Size	mm	250
	inch	10
Power handling	peak	900
	continuous	300
Impedance	Ω	4

APBX G7* SUBWOOFER
The optional subwoofer integrates perfectly into the car trunk.

*(Optional : Not included in APSP G7
- To be ordered separately.)

DCC WIRING KIT
Using DCC Technology, the Prima Sound Pack APSP GOLF 7 is packaged with a specific harness which derives the power supply for the AP8.9 bit G7 from directly behind the OEM head-unit. The AP8.9 bit input/output connections to the OEM head-unit and OEM speaker wiring are simplified with a single customized wiring kit, easy to route in the vehicle interior.

HIGH POWER IN COMPACT SIZE

audison

USS universal
speakers
simulator

adt audison
d class
technology

55

A sophisticated design distinguishes the SR amplifiers, a complete line that ranges from 5 channels to monophonic, all featuring the use of the most advanced D Class technology, for exceptional audio performance within compact dimensions.

SR



Piazza della Signoria, Firenze

SR AMP



The filter section, complete and accessible from above, facilitates the work of the specialist during the calibration phase.



After numerous listening tests in a double-blind configuration on a significant sample of professionals and enthusiasts, the R&D team decided to adopt a new D-class technology called ADT (Audison D-Class Technology) for the whole range, which made it possible to reduce the size of the amplifiers considerably, totally preserving the audio performance that characterize each Audison project.




EDGELESS DESIGN
As for the electronics design, the Audison style center has taken care of every aesthetic and functional detail, obtaining a compact amplifier made of extruded aluminium with rounded corners that ease the installation of the product in narrow spaces. Thanks to the generous heat sinks on the two short sides of the amplifiers, internal cooling fans are not necessary, which are often cause of noise and dust accumulation.

SR AMP



USS TECHNOLOGY
Thanks to the integration of the **USS technology** (Universal Speakers Simulator), the new SR amplifiers can also be connected to head-units featuring the "speaker load detection" circuit that would otherwise mute the audio signal output.


TECHNICAL SPECIFICATIONS				SR 1.500	SR 4.300	SR 4.500	SR 5.600
Channel mode				1	4 - 3 - 2	4 - 3 - 2	5 - 3
Output Power (RMS) @14.4 VDC	@ 4 Ω	W x Ch		500 x 1	85 x 4	130 x 4	75 x 4 + 330 x 1
		W x Ch (bridge)		-	250 x 2	450 x 2	230 x 2 + 310 x 1
	@ 2 Ω	W x Ch		800 x 1	130 x 4	220 x 4	-
	@ 1 Ω	W x Ch		1000 x 1	-	-	-
	RMS Output Power	4 Ω, 1% THD, 14.4 VDC	W x Ch	500 x 1	75 x 4	125 x 4	75 x 4 + 300 x 1
	S/N Ratio	Ref. 1 W Output	dBa	75	82	83	75 W: 84 dBa – 300 W: 75 dBa



TECHNICAL SPECIFICATIONS		bit One HD Virtuoso	bit One	bit Nove	bit Ten
Audio Inputs	Analog inputs (high levels / pre in)	12 high lev. + 6 pre in	8 high lev. + 6 pre in	6 high lev. + 6 pre in	4 high lev. + 4 pre in
	Analog low-level stereo auxiliary input	1	2	1	1
	USS technology	✓	-	✓	✓
	Optical digital input	2	1	2	-
	Electric coaxial digital input	-	1	-	-
	High-level momentary audio interrupt input with system turn on capability (with Phone Mute IN) for use with mobile phone or navigation systems	-	1	-	1
Audio Outputs	Independent analog PRE channels featuring adjustable level	13	8	9	5
	Independent digital audio channels through AD Link output (CAT5 STP LAN cable for use with AD Link provided amplifiers)	13	8	-	-
Input/Output Controls	USB /B (3.0 / micro USB 2.0 only for bit One HD Virtuoso) connector for PC connection	✓	✓	✓	✓
	AC Link control bus connectors for DRC / DRC MP / DRC AB and provided amplifiers	✓	✓	✓	✓
	Remote In/Key mem	✓	✓	Only for DRC	Only for DRC
	Remote out with fixed delay or adjustable by PC	adj.	fixed	adj.	adj.
	Mute In and Phone Mute controls settable by PC to switch the audio inputs to auxiliary inputs with turn on capability	-	✓	✓	✓
OEM Integration features	Automatic De-Equalization	✓	✓	✓	✓
	Automatic Delay-Compensation	✓	-	-	-
	All Pass Compensation	✓	-	-	-
	Polarity check	✓	-	-	-
	Full range stereo signal derived through automatic routing high level input channels	✓	✓	✓	✓
	Pass-Through configuration	✓	-	-	-
	Auto tune with Audison bit Tune	✓	✓	✓	✓
	Guided procedure that, thanks to a wide range of set names, provides the ability to assign each speakers channel to the bit processor connections and automatically coordinate their functioning	✓	✓	✓	✓
In/Out Volume	Reference tone/signal for sensitivity adjusting	CD-DVD	CD-DVD	CD	CD
	Main input sensitivity adjustment	automatic with PC	automatic with PC	manual	manual
	Independent level control for each output channel for system fine tuning	-40 ÷ 0 dB	-40 ÷ 0 dB	-40 ÷ 0 dB	-40 ÷ 0 dB
Equalizer	Dynamic equalizer: self-adjusting gain between low and high listening levels	✓	✓	-	-
	Bass Boost	"Adjustable parametric pole (±12 dB; 10 ÷ 500 Hz)"	-	"N. 2 Adjustable parametric pole (±12 dB; 10 ÷ 500 Hz)"	-
	Automatic de-equalization (with supplied Test CD *- DVD - Audio files)	with 'time delay compensation'	✓	✓	✓
	Equalizers for each auxiliary inputs	"Parametric Equalizer: +12 dB ÷ -15 dB; 10 poles FIR type"	31 band (1/3 oct; +/-12dB)	-	-
	Independent graphic equalizers for each output channel with IIR FILTERS	N.13 Parametric Equalizers: +12 dB ÷ -15 dB; 13 poles	31 band (1/3 oct; +/-12dB)	N.9 Parametric Equalizers: ±12 dB;10 pole;	31 band (1/3 oct; +/-12dB)
	Independent graphic equalizers for each output channel with FIR FILTERS	N.13 Parametric Equalizers: +12 dB ÷ -15 dB; 9 poles FIR type +3 poles IIR type	-	-	-
	MAIN EQ	"Parametric Equalizer: +12 dB ÷ -15 dB; 5 poles FIR type + 1 pole IIR type"	-	-	-
Crossover Filter	Filter typology: Hi-pass, Lo-pass, Full Range, Band-pass	✓	✓	✓	✓
	Cut-off frequency steps	70 (10 Hz to 20 kHz) + direct numeric frequency input	70 (10 Hz to 20 kHz)	68 (20 Hz to 20 kHz)	68 (20 Hz to 20 kHz)
	Filter mode and Cut-off slope	FIR / Linkwitz -Butterworth -Bessel 6 to 48 dB/Oct.	Linkwitz -Butterworth 6 to 48 dB/Oct.	Linkwitz -Butterworth 6 to 24 dB/Oct.	Linkwitz -Butterworth 6 to 24 dB/Oct.
	Bandpass filter with asymmetrical slope setting	✓	-	✓	✓
	Alignments	✓	✓	✓	✓
	Mute: Selectable for each output (On/Off)	✓	✓	✓	✓
	Phase: Selectable for each output (0°/180°)	✓	✓	✓	✓
Time Alignment	Guided procedure for the speaker distance data entry with an automated calculation of proper time delays for each channel for accurate time alignment set-up	✓	✓	✓	✓
	Delay	0 ÷ 22 ms	0 ÷ 22 ms	0 ÷ 15 ms	0 ÷ 15 ms
DRC / DRC MP / DRC AB	Digital Remote Control (DRC/DRC MP/ DRC AB) supplied with product	✓ (DRC MP)	✓ (DRC)	✓ (DRC AB)	Optional / DRC AB
	Master Volume control, Subwoofer Volume control, Balance control, Fader control; Input selection; Memory selection	✓	✓	✓	✓
	Bass Boost control	✓	-	✓	-
	Dynamic Equalizer On/Off	✓	✓	-	-
Memory	Available presets separately managed and recalled by the DRC/DRC MP/DRC AB Remote Control	8 (DRC MP)	4	4	2
bit software	Microsoft Windows (XP, Vista, 7, 8, 10) based software with "Standard" and "Expert" operating modes; minimum screen resolution: 1024 x 600 px	✓	✓	✓	✓

voce



TECHNICAL SPECIFICATIONS			AV uno	AV due	AV quattro	AV 5.1k - AV 5.1k HD
Channel mode			1	2 - 1	4 - 3 - 2 (A/B)	5 (A/B/C)
Output Power (RMS) @14.4 VDC	@ 4 Ω	W x Ch	700 x 1	260 x 2	120 x 4 / 400 x 2	75x2/A + 140x2/B + 600x1/C
	@ 4 Ω	W x Ch (Bridge)	-	900 x 1	120 x 2 + 400 x 1 (3Ch)	-
	@ 4/2 Ω	W x Ch	-	-	120 x 2 + 200 x 2	75x2/A + 140x2/B + 1000x1/C
	@ 2/4 Ω	W x Ch	-	-	200 x 2 + 400 x 1 (3Ch)	75x2/A + 250x2/B + 600x1/C
	@ 2 Ω	W x Ch	1300 x 1	450 x 2	200 x 4	-
	@ 1 Ω	W x Ch	1700 x 1	-	-	-
Filters	All channel full range		OK	OK	OK	OK - AD Link digital inputs only for HD version
	Hi-pass	Hz @ dB/ Oct	-	50 ÷ 5k (2 range) @ 12	A/B: 50 ÷ 5k (2 range) @ 12	A: 50 ÷ 5k (2 range) @ 12 - Not present in HD version
			-	-	-	B: 50 ÷ 1k @ 12 - Not present in HD version
	Lo-pass	Hz @ dB/ Oct	50 ÷ 150 @ 24	50 ÷ 5k (2 range) @ 12	A/B: 50 ÷ 5k (2 range) @ 12	B: 250 ÷ 5k @ 12 - Not present in HD version
			-	50 ÷ 500 (mono) @ 24	B: 50 ÷ 500 (mono) @ 24	C: 50 ÷ 150 @ 24 - Not present in HD version
	Subsonic	Hz @ dB/ Oct	Off ÷ 50 @ 24	-	-	-
	PRE Out	Hz @ dB/ Oct	Hi-pass: 50 ÷ 150 @ 12	Full range	Full range	Full range - AD Link digital outputs only for HD vesion
	Remote Sub Vol. - VCRA	(-50 ÷ 6) dB	OK	24db/Oct. Lo-Pass mono	B Ch 24db/Oct. Lo-Pass mono	C Ch
THD	1 kHz/100 Hz @ 4 Ω	%	0.04	0.04	0.04	A/B: 0.05 / C: 0.3
S/N Ratio	A weighted @ 1 V	dBA	95	100	100	A/B: 100 / C: 87
Damping factor	1 kHz/100 Hz @ 4 Ω		160	120	100	A/B: 100 / C: 80
VCRA - Remote Sub Volume Control (optional)			OK	OK	OK	OK - AC Link to connect a DRC only for HD version
Size	W x D x H	mm	220 x 470 x 58	220 x 470 x 58	220 x 470 x 58	220 x 470 x 58
		inch	8,66 x 18,50 x 2,28	8,66 x 18,50 x 2,28	8,66 x 18,50 x 2,28	8,66 x 18,50 x 2,28
	RMS Output Power	4 Ω, 1% THD, 14.4 VDC	W x Ch	260 x 2	120 x 4	75 x 2 + 140 x 2 + 600 x 1
	S/N Ratio	Ref. 1 W Output	dBA	80	80	A/B: 80 - C: 78




TECHNICAL SPECIFICATIONS		AV 1.1	AV 3.0	AV 6.5	AV X6.5	AV K6
Type		Tweeter	Midrange	Woofer	Coaxial	2 way system
Size	Tweeter mm (in.)	28 (1.1)	-	-	25 (1)	28 (1.1)
	Midrange mm (in.)		70 (3)	-	-	-
	Woofer mm (in.)	-	-	165 (6.5)	165 (6.5)	165 (6.5)
Power handling W	peak	180 Hi-pass filtered 2.0 kHz @ 12 dB/Oct.	100 Hi-pass filtered 250 Hz @ 12 dB/Oct.	200	200	250
	continuos	-	-	100	100	125
Impedance	Ω	4	4	4	4	4
Freq. Response	Hz	1.2k ÷ 22k	200 ÷ 14k	50 ÷ 7k	50 ÷ 22k	50 ÷ 22k
Sensitivity	dB/Spl	92	93	91	91	91
Magnet	Tweeter	Neodymium REN	Neodymium REN	-	Neodymium REN	Neodymium REN
	Midrange/Woofer	-	-	High density flux ferrite	High density flux ferrite	High density flux ferrite
	Tweeter	Tetolon fibre	-	-	Tetolon fibre	Tetolon fibre
Dome/cone	Midrange/Woofer	-	Cotton fibre pressed paper with light damping treatment	Cotton fibre pressed paper with light damping treatment	Cotton fibre pressed paper with light damping treatment	Cotton fibre pressed paper with light damping treatment
		Included	Included	Optional	Optional	Included


audison

prima



TECHNICAL SPECIFICATIONS			AP F8.9 bit/24V	AP8.9 bit	AP5.9 bit	AP4.9 bit
Channel mode			8 - 4	8 - 4	5	4
Output Power (RMS) @14.4 VDC	@ 4 Ω	W x Ch	85 x 8 / 260 x 4 (Bridge)	35 x 8 / 130 x 4 (Bridge)	20 x 2 + 50 x 2 + 150 x 1	70 x 4 / 260 x 2 (Bridge)
	@ 2 Ω	W x Ch	130 x 8	65 x 8	40 x 2 + 90 x 2 + 270 x 1	130 x 4
PRIMA DSP	Filter type		Full / Hi Pass / Lo Pass / Band Pass			
	Filter mode and slope	dB	Linkwitz @ 12/24 - Butterworth @ 6/12/18/24			
	Crossover frequency	Hz	68 steps @ 20 ÷ 20k			
	Phase control		0° / 180°			
	Bass Boost		N.2 Adjustable Parametric Pole			
	Analog Input Equalizer		Automatic De-Equalization			
	Output Equalizer		N.9 Parametric Equalizers: ±12 dB;10 pole; 20 ÷ 20k Hz			
	Time Alignment Distance	cm / in.	0 ÷ 510 / 0 ÷ 200.8			
THD	1 kHz @ 4 Ω	%	0.06	0.05	0.08	0.1
	S/N Ratio Master Input	A weighted @ 1 V	dBA	100	95	95
S/N Ratio Master Digital Input	A weighted @ 1 V	dBA	105	100	100	100
	Damping factor	1 kHz @ 4 Ω	> 110	> 70	> 70	> 170
DRC MP / DRC AB			Optional	Optional	Optional	Optional
Size		W x D x H	mm	238 x 49.5 x 155	198 x 45,50 x 134	198 x 45,50 x 134
	RMS Output Power		inch	9.37 x 1.95 x 6.1	7.8 x 1.8 x 5.27	7.8 x 1.8 x 5.27
		4 Ω, 1% THD, 14.4 VDC	W x Ch	85 x 8	35 x 8	20 x 2 + 50 x 2 + 150 x 1
	S/N Ratio	Ref. 1 W Output	dBA	80	85	80



TECHNICAL SPECIFICATIONS			AP F1D	AP4 D	AP1 D
Channel mode			1	4 - 2	1
Output Power (RMS) @14.4 VDC	@ 4 Ω	W x Ch	500	70 x 4 / 260 x 2 (Bridge)	310
	@ 2 Ω	W x Ch	800	130 x 4	540
THD	1 kHz @ 4 Ω	%	0.1	0.1	0.2
S/N Ratio Master Input	A weighted @ 1 V	dBA	101	95	100
Damping factor	1 kHz @ 4 Ω		120	170	160
Size	W x D x H	mm	238 x 49.5 x 155	198 x 45,50 x 134	198 x 45,50 x 134
		inch	9.37 x 1.95 x 6.1	7.8 x 1.8 x 5.27	7.8 x 1.8 x 5.27
	RMS Output Power	4 Ω, 1% THD, 14.4 VDC	W x Ch	500	70 x 4
	S/N Ratio	Ref. 1 W Output	dBA	80	85

audison

prima

PRIMA SPEAKERS SYSTEM								
		APK 130	APK 165	APK 165 02	APK 165P	APK 163	APK 570	APK 690
Type		2 way system	2 way system	2 way system	2 way system	3 way system	2 way system	2 way system
Size	Tweeter mm (in.)	26 (1)	26 (1)	26 (1)	29 (1.14)	26 (1)	26 (1)	26 (1)
	Midrange mm (in.)	-	-	-	-	100 (4)	-	-
	Woofer mm (in.)	130 (5)	165 (6.5)	165 (6.5)	165 (6.5)	165 (6.5)	5 x 7	5 x 7
Power handling W	peak	225	300	300	345	375	300	300
	continuos	75	100	100	115	125	100	100
Impedance	Ω	4	4	2	4	4	4	4
Freq. Response	Hz	70 ÷ 20k	60 ÷ 20k	50 ÷ 20k	50 ÷ 24k	50 ÷ 20k	55 - 20 k	40 - 20 k
Sensitivity	dB/Spl	93	93,5	95	92,5	93,5	93,5	93,5
Magnet	Tweeter	Neodymium REN	Neodymium REN	Neodymium REN	Neodymium REN	Neodymium REN	Neodymium REN	Neodymium REN
	Midrange/Woofer	High density flux ferrite	High density flux ferrite	High density flux ferrite	High density flux ferrite	High density flux ferrite	High density flux ferrite	High density flux ferrite
Dome/cone	Tweeter	Tetolon fibre	Tetolon fibre	Tetolon fibre	Tetolon fibre	Tetolon fibre	Tetolon fibre	Tetolon fibre
	Midrange/Woofer	Water-repellent treated paper cone	Water-repellent treated paper cone	Water-repellent treated paper cone	Water-repellent treated paper cone	Water-repellent treated paper cone	Water-repellent treated paper cone	Water-repellent treated paper cone
Grille		Included	Included	Included	Optional	Included	-	-



PRIMA SPEAKERS COMPONENT									
		AP 1	AP 2	AP 4	AP 5	AP 6.5	AP 6.5 02	AP 8	AP 690
Type		Tweeter	Wide range	Mid bass	Woofer	Woofer	Woofer	Woofer	Woofer
Size	Tweeter mm (in.)	26 (1)	-	-	-	-	-	-	-
	Midrange mm (in.)	-	50 (2)	100 (4)	-	-	-	-	-
	Woofer mm (in.)	-	-	-	130 (5)	165 (6.5)	165 (6.5)	200 (8)	(6 x 9)
Power handling W	peak	150 Hi-pass filtered @3,5 kHz - 12 dB Oct	50	120	150	210	300	300	300
	continuos	-	25	40	50	70	100	100	100
Impedance	Ω	4	4	4	4	4	2	4	4
Freq. Response	Hz	2k ÷ 20k	150 ÷ 20k	80 ÷ 7,5k	70 ÷ 5k	60 ÷ 5k	50 ÷ 5k	35 ÷ 3k	35 ÷ 5k
Sensitivity	dB/Spl	93	83,5	91	93	93,5	95	93,5	95
Magnet	Tweeter	Neodymium REN	-	-	-	-	-	-	-
	Midrange/Woofer	-	Neodymium REN	High density flux ferrite	High density flux ferrite	High density flux ferrite	High density flux ferrite	High density flux ferrite	High density flux ferrite
Dome/cone	Tweeter	Tetolon fibre	-	-	-	-	-	-	-
	Midrange/Woofer	-	Aluminium	Water-repel-lent treated paper cone	Water-repel-lent treated paper cone	Water-repel-lent treated paper cone	Water-repel-lent treated paper cone	Water-repel-lent treated paper cone	Water-repel-lent treated paper cone
Grille		Inluded	-	-	-	-	-	-	-

audison

prima



PRIMA SPEAKERS COAXIAL						
		APX 4	APX 5	APX 6.5	APX 570	APX 690
Type		2 way coaxial	2 way coaxial	2 way coaxial	2 way coaxial	3 way coaxial
Size	Tweeter mm (in.)	24 (0.9)	24 (0.9)	24 (0.9)	24 (0.9)	Supertweeter - 15 (0.6)
	Midrange mm (in.)	-	-	-	-	Tweeter - 40 (1.58)
	Woofer mm (in.)	100 (4)	130 (5)	165 (6.5)	(5 x 7)	(6 x 9)
Power handling W	peak	120	150	210	210	300
	continuos	40	50	70	70	100
Impedance	Ω	4	4	4	4	4
Freq. Response	Hz	80 ÷ 23k	70 ÷ 23k	60 ÷ 23k	60 ÷ 23k	40 ÷ 20k
Sensitivity	dB/Spl	91	93	94	94	96
Magnet	Tweeter	Neodymium REN	Neodymium REN	Neodymium REN	Neodymium REN	Neodymium REN
	Midrange/Woofer	High density flux ferrite	High density flux ferrite	High density flux ferrite	High density flux ferrite	High density flux ferrite
Dome/cone	Tweeter	Tetolon fibre	Tetolon fibre	Tetolon fibre	Tetolon fibre	Tetolon fibre
	Midrange/Woofer	Water-repellent treated paper cone	Water-repellent treated paper cone	Water-repellent treated paper cone	Water-repellent treated paper cone	Water-repellent treated paper cone
Grille		-	-	-	-	Included



PRIMA SUBWOOFER					
		APS 8 R	APS 8 D	APS 10 D	APS 10 S4S
Type		Subwoofer component	Subwoofer component	Subwoofer component	Subwoofer component
Speaker size	mm (in.)	200 (8)	200 (8)	250 (10)	250 (10)
Box size	mm (in.)	-	-	-	-
Power handling W	peak	500	500	800	800
	continuos	250	250	400	400
Impedance	Ω	4	4 + 4	4 + 4	4
Sensitivity	dB/Spl	84	83,5	84	83,5
Magnet		High density flux ferrite	High density flux ferrite	High density flux ferrite	High density flux ferrite
	Midrange/Woofer	Cotton-Fibre pressed paper	Cotton-Fibre pressed paper	Cotton-Fibre pressed paper	Cotton-Fibre pressed paper
Grille		Included	Included	Included	Included

audison

prima



PRIMA SUBWOOFER								
		APBX 8 R	APBX 8 DS	APBX 10 DS	APBX 10 S4S	APBX G7	APBX 8 AS2	APBX 10 AS2
Type		Reflex sub box	Sealed sub box	Sealed sub box	Sealed sub box	Reflex sub box	Active sub box	Active sub box
Speaker size	mm (in.)	200 (8)	200 (8)	250 (10)	250 (10)	250 (10)	200 (8)	250 (10)
Box size	mm (in.)	473 (18.62) x 334 (13.15) x 109 (4.29)	377 (14.84) x 334 (13.15)x 109 (4.29)	472 (18.58) x 334 (13.15) x 120 (4.72)	472 (18.58) x 334 (13.15) x 120 (4.72)	984 (38.74) x 125 (4.92) x 356 (14.02)	386 (15.2) x 158 (6.22) x 298 (11.73)	460 (18.11) x 158 (6.22) x 338 (13.31)
Power handling W	peak	500	500	800	800	900	500	800
	continuous	250	250	400	400	300	250	400
Impedance	Ω	4	4 + 4	4 + 4	4	4	0,4	0,16
Sensitivity	dB/Spl	-	-	-	-	-	-	-
Magnet		High density flux ferrite	High density flux ferrite	High density flux ferrite	High density flux ferrite	High density flux ferrite	High density flux ferrite	High density flux ferrite
	Midrange/ Woofer	Cotton-Fibre pressed paper	Cotton-Fibre pressed paper	Cotton-Fibre pressed paper	Cotton-Fibre pressed paper	Cotton-Fibre pressed paper	Cotton-Fibre pressed paper	Cotton-Fibre pressed paper
Grille		Included	Included	Included	Included	Included	Included	Included




PRIMA SPEAKER FOR BMW & MINI							
		APBMW X4M	APBMW X4E	APBMW K4E	APBMW K4M	APBMW S8-2	APBMW S8-4
Type		Coaxial	Coaxial	2 way system	2 way system	Woofer	Woofer
Size	Tweeter mm (in.)	24 (0.9)	24 (0.9)	29 (1.1)	26 (1)	-	-
	Mid-range mm (in.)	100 (4)	100 (4)	100 (4)	165 (6.5)	-	-
	Woofer mm (in.)	-	-	-	-	200 (8)	200 (8)
Power handling W	peak	80	80	100	300	300	300
	continuous	40	40	50	100	150	150
Impedance	Ω	4	4	4	4	2	4
Freq. Response	Hz	100 ÷ 22k	100 ÷ 22k	90 ÷ 23k	60 ÷ 20k	40 ÷ 500	35 ÷ 500
Sensitivity	dB/Spl	88	88	89	93,5	91	88
Magnet	Tweeter	Neodymium REN	Neodymium REN	Neodymium REN	Neodymium REN	-	-
	Mid-range	Neodymium REN	Neodymium REN	Neodymium REN	Neodymium REN	-	-
	Woofer	-	-	-	-	Neodymium REN	Neodymium REN
Dome/cone	Tweeter	Tetolon fibre	Tetolon fibre	Tetolon fibre	Tetolon fibre	-	-
	Midrange/ Woofer	Cotton-Fibre pressed paper	Cotton-Fibre pressed paper	Cotton-Fibre pressed paper	Cotton-Fibre pressed paper	Cotton-Fibre pressed paper	Cotton-Fibre pressed paper

audison

SR



TECHNICAL SPECIFICATIONS				SR 1.500	SR 4.300	SR 4.500	SR 5.600
Channel mode				1	4 - 3 - 2	4 - 3 - 2	5 - 3
Output Power (RMS) @14.4 VDC	@ 4 Ω	W x Ch	500 x 1	85 x 4 / 250 x 2	130 x 4 / 450 x 2	-	
	@ 4 Ω	W x Ch (Bridge)	-	80 x 2 + 250 x 1	120 x 2 + 480 x 1	75 x 4 + 330 x 1 / 230 x 2 + 310 x 1	
	@ 4/2 Ω	W x Ch	-	-	-	115 x 4 + 550 / 230 x 2 + 550 x 1	
	@ 2/4 Ω	W x Ch	-	130 x 2 + 260 x 1	220 x 2 + 440 x 1	-	
	@ 2 Ω	W x Ch	800 x 1	130 x 4	220 x 4	-	
	@ 1 Ω	W x Ch	1000 x 1	-	-	-	
Filters	All channel full range		-	OK	OK	4 CH	
	Hi-pass	Hz @ dB/Oct	-	A CH: 50 ÷ 3.2k @ 12	A CH: 50 ÷ 3.2k @ 12	A CH: 50 ÷ 5k @ 12	
			-	B CH: 50 ÷ 3.2k @ 12	B CH: 50 ÷ 3.2k @ 12	B CH: 50 ÷ 5k @ 12	
	Band-pass	Hz @ dB/Oct	-	-	-	B CH: 50 ÷ 500 (Hi) @ 12 - 50 ÷ 5 kHz (Lo) @ 12	
	Lo-pass	Hz @ dB/Oct	50 ÷ 250 @ 24	A CH: 50 ÷ 3.2k @ 12	A CH: 50 ÷ 3.2k @ 12	C CH: 50 ÷ 500 @ 24	
			-	B CH: 50 ÷ 3.2k @ 12	B CH: 50 ÷ 3.2k @ 12	-	
	Bass Boost	Hz @ dB		B CH: 50 (0 ÷12)	B CH: 50 (0 ÷12)	C CH: 50 (0 ÷ 12)	
	Subsonic	Hz @ dB/Oct	On/Off 25 Hz @ 24	-	-	-	
	PRE Out	Hz @ dB/Oct	Hi-pass: 50 ÷ 250 @ 12	Full range	Full range	-	
	Remote Sub Vol.- VCR-S1	(-20 ÷ 6) dB	OK	-	-	OK	
THD	100 Hz @ 4 Ω	%	0.1	0.03	0.08	0.02	
S/N Ratio	A weighted @ 1 V	dBa	100	100	105	105	
Damping factor	100 Hz @ 4 Ω		> 300	150	200	300	
VCR-S1 - Remote Sub Volume Control			Optional	-	-	Optional	
Size		W x D x H	mm	264 x 155 x 47,5	190 x 155 x 47,5	264 x 155 x 47,5	294 x 155 x 47,5
			inch	10.39 x 6.10 x 1.87	7.48 x 6.10 x 1.87	10.39 x 6.10 x 1.87	11.57x 6.10 x 1.87
	RMS Output Power	4 Ω, 1% THD, 14.4 VDC	W x Ch	500 x 1	75 x 4	125 x 4	75 x 4 + 300 x 1
	S/N Ratio	Ref. 1 W Output	dBa	75	82	83	75 W: 84 dBa – 300 W: 75 dBa

audison

AUDISON HISTORY

THE UNION OF ORIGINS, HISTORY AND INNOVATION



The name Audison derives from the fusion of the Latin words AUDIO AND SONUS; they represent the historic roots and philosophy of this company, which was created and located in the Marche region, Italy, a geographical area world famous for the production of appreciated musical instruments, initially by highly specialized handicraft, nowadays by cutting-edge electronic industries.

An exceptionally stimulating habitat for a reality made of music, tradition and electronics.

This is where everything started, in 1979, when a group of technicians, coming from different electronics fields and sharing a passion for high-fidelity, gathered around a dream called Audison.

Clockwise from the top: the first Audison amplifier; the founding associates: Pietro Pantaleone, Maria Riccobelli, Emidio Vagnoni; Potenza Picena, Italy

audison

ISTINTO INNOVATIVO

It is embedded in Audison philosophy and reflected in every aspect of the product. Innovation is what shapes the whole design process and begins with conceiving amplifiers, speakers and digital processors that deliver unique value and enhance in-car listening experiences.

Design also means extreme care for every detail, not only aesthetics but perfection of performance, in its purest form. That is where the distinctive Audison essence manifests itself.

TECHNOLOGY AND EMOTIONS, HAND IN HAND

Therefore, further to original results, through internal pioneering research activities, Audison develops masterpieces of technology and design, thanks to its R&D team impressive mastery. Unveiling a new frontier in high-fidelity in-car reproduction, Audison allows audiophiles' wildest dreams to come true.

PASSION AND CARE ARE THE TRUE DRIVERS

Audison is devoted to in-car high fidelity as a form of art, which requires passion and care down to the smallest detail, expertise in the selection of materials, high standards for each production phase, the most advanced testing tools and the strictest quality control procedures. Acoustic quality can not accept compromise.

audison

Audison has a long history in the pursuit of perfection in audio performance. As early as 1991, HR 100 stood out as a benchmark, bringing the Audison brand into the Olympus of Hi-End manufacturers. Produced up to the year 2003, it has never been forgotten by fans all over the world.



'91
HR 100, amplifier

Four years later the THESIS brand was created. Using the latest technology, Audison once again rewrote history on amplifier performance. In 1994 and in 1995 respectively, HV sedici and HV trenta amplifiers came to light.



'94
HV sedici, amplifier



'95
HV trenta, amplifier

audison



elettromedia

Elettromedia, an Italian company, is a leader within the world-wide car Hi-Fi market. Born in 1987 in Potenza Picena by a group of friends who shared the same passion for in-car high fidelity, throughout the past years Elettromedia has been walking the path of excellence: its products are distributed in more than 50 countries; the company has received many awards and acknowledgements from the most authoritative leaders within the car audio industry; it also boasts reviews of more than 3000 pages published in 30 different languages (visit: <https://www.elettromedia.com/media-centre/press-review/>). The Elettromedia brands are Audison, Hertz and Connection. Through a co-branding strategy, the company offers all of the components required for a complete, top-level car audio system. Since 2008, Elettromedia has a joint venture with Lavoce Italiana a company specialized in loudspeaker design and production for the professional audio industry.



Elettromedia
web site

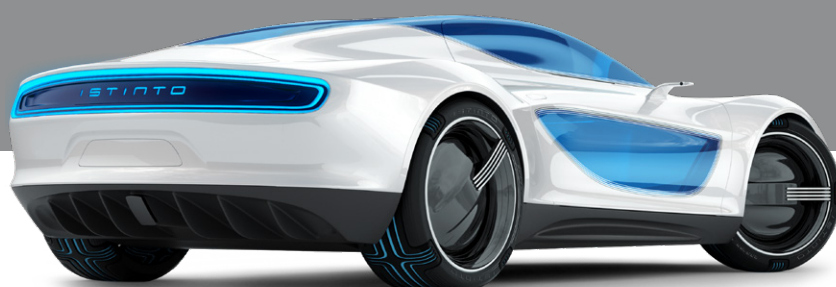
Contacts: Elettromedia s.r.l.
Strada Regina km 3,500 - 62018 Potenza Picena (Mc) - Italy
T +39 0733 870 870 - F +39 0733 870 880 - elettromedia.com

audison

ISTINTO
INNOVATIVO

www.audison.eu

www.audison.eu



audison
ISTINTO
INNOVATIVO



PART OF ELETTROMEDIA
62018 Potenza Picena (MC) Italy
T +39 0733 870 870 - F +39 0733 870 880
www.elettromedia.it